

LEGACY

OF HOPE & HEALTH



The background of the page features a dark purple color. On the left, there are silhouettes of three marching band members in profile, wearing hats and playing brass instruments. On the right, there is a silhouette of a tiger in a striped pattern, standing on its hind legs and holding a large, open umbrella. The word "CONTENTS" is written in a large, bold, yellow serif font, positioned in the lower-left quadrant of the page.

CONTENTS

3	ABOUT THE FOUNDATION	11	TEACH
5	BOARD OF DIRECTORS & STAFF	13	HEAL
7	DISCOVER	15	SERVE
9	DOCTORS' DAY	17	FINANCIALS

When we match your passion with great programs and people, great things happen.



Our mission is to inspire donors to invest in the LSU Health Sciences Center - New Orleans (“HSC”) and its future and to properly steward those contributions, and to help meet the ever evolving needs of the LSU Health Sciences Center - New Orleans by providing new philanthropic and business resources, partnerships, programs, real estate and property leases, auxiliary businesses and other services that support and strengthen the educational and community mission of the LSU Health Sciences Center.

The LSU Health Foundation New Orleans is an institutionally-related 501(c)(3) organization that supports LSU Health New Orleans and its fourfold mission of education, patient care, research, and community outreach. LSU Health treats over one million patients annually and is Louisiana’s largest safety net healthcare system. LSU Health especially prides itself on the many community outreach activities in which its faculty, residents, and students are engaged.



Dear Friends, Colleagues, Donors, and Partners,

Much has changed in the world around us. What has not changed is our gratitude to you for what we have been able to accomplish together through your wonderful support and inspiring partnership.

At the heart of our mission is our promise to educate future generations of health care providers. Opening new doors for academically gifted yet financially needy students to achieve their dreams to change the world continues to uplift and propel us forward to new heights.

Our enhanced partnerships across LSU Health campuses support our academically excellent student training programs, our compassionate patient care clinics, our innovative research facilities, and our collaborative community outreach programs across the state. None of this important work could be possible without YOU. From bench to bedside, you have been there every step of the way. We continue to embrace a bright future ahead.

Thank you for lighting the way forward.

A handwritten signature in purple ink, reading "Christina South", located at the bottom left of the page.



Christina South

Chief Development Officer
LSU Health Foundation New Orleans

MEET *our* STAFF & BOARD *of* DIRECTORS

Board Members

1. Brian P. Jakes, Sr. — Chairman
2. Al Bienvenu — Vice Chairman
3. Kristi M. Soileau, DDS, Med MSHCE — Secretary
4. Mark Juneau, Jr., MD — Treasurer
5. Warren L. Gottsegen, MD — Immediate Past President
6. Virginia Angelico-Tatum, DDS — Board Member
7. James A. Caillier, Ed.D — Board Member
8. Linda Cao, DDS — Board Member
9. Al Copeland, Jr. — Board Member
10. Jay C. Dumas, DMD — Board Member
11. Elizabeth B. Grieshaber, MD — Board Member
12. Karl Ernst Hoefer — Board Member
13. Edwin K. Hunter — Board Member
14. Eric L. Laborde, MD — Board Member
15. Joseph N. Macaluso, Jr., MD FACS — Board Member
16. Cris Mandry, MD, FACEP, FAAEM — Board Member
17. Brian H. Melius, DVM — Board Member
18. André M. Rubenstein — Board Member
19. Robert A. Savoie, Ph.D. — Board Member
20. Lewis King Scott, DDS — Board Member
21. E. Paige Sensenbrenner, Esq. — Board Member
22. Carroll W. Suggs - Past Chairman — Board Member
23. Najeeb M. Thomas, MD — Board Member

Development Team

Christina South

Chief Development Officer

Elise Raynal

Director of Development, School of Dentistry

Brandi Hernandez

Director of Prospect Management & Research

Jenna Cronin, bCRE-PRO

Director of Advancement Services

Keisha Calvin

Database Associate

Sarah Petty

Director of Development Operations

Morgan Trulen

Director of Scholarship and Fund Administration

Denise DeLany, MSOM, CGMS, CRA

Director of Grants

Caitlin Strother

Associate Director of Events & Marketing

Hermína Lezama

Associate Director of Corporate & Foundation Relations

Caroline Skinner

Development Associate

Accounting & Finance Team

Lee Trumble

Vice President & Chief Financial Officer

Joseph Harness

Accounting Manager

Laurie Phillips

Accounting Manager

Adrienne Kiefer

Accounting Associate

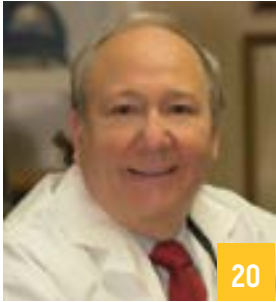
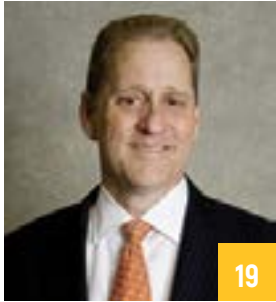
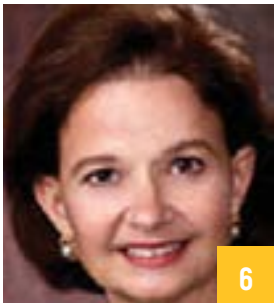
Business Ventures Team

Alejandra Guzman

Chief Business Development Officer

Luis Medina

Property Manager



DISCOVER

EMPOWERING VETERANS & MAKING STRIDES IN SUICIDE PREVENTION

The VISION (Veteran-Informed Safety Intervention & Outreach Network) Coalition is part of a research study aimed at reducing and preventing veteran suicide by firearm. They work with firearms professionals and instructors, law enforcement officers, community leaders, and health professionals to identify and develop strategies to prevent veteran suicide by creating time and distance from firearms.

Through collaboration with coalition members and other suicide prevention projects, they have focused on three main areas: creating out-of-home firearm storage solutions, improving in-home firearm storage solutions, and improving messaging and outreach around safe firearm handling and storage practices.



Since 2019

- Developed a brief video and slide deck that introduces concepts of firearm safety for suicide prevention.
- Partnered with firearm retailers in South Louisiana to raise awareness about the problem of firearm suicide.
- Assisted in passing RS 40:1800 in Louisiana to provide a limitation of liability for retailers who hold firearms on behalf of their owner.
- Attended gun shows across Louisiana to raise awareness about the problem of firearm suicide.

The VISION Coalition works closely with veterans, volunteers, community and advocacy groups, and a variety of other relevant stakeholders. VISION was started in 2019 with the initial goal to learn from the community. The first year of the project was dedicated to speaking with veterans, their friends and families, firearm professionals, and suicide prevention experts.

As VISION continues to expand, the coalition plans to hire a veteran to run the program, expand their programs, and provide a small amount of compensation to retailers who offer out-of-home firearm storage.

To make a donation to VISION, please visit give.LSUHealthFoundation.org



THANK YOU TO ALL OUR HEALTHCARE HEROES ON DOCTORS' DAY & EVERY DAY.

Doctors' Day is a nationally recognized day to thank our healthcare heroes for their hard work and dedication. Here at the Foundation, we like to honor this annual tradition by bringing our community together to show them how much they are appreciated by the Foundation and campus, their patients, and the greater community.

While the pandemic brought most of our events into the virtual forum for two years, we were absolutely thrilled that our community was able to gather at the Pontchartrain Hotel's Hot Tin Roof in March 2022. It was a beautiful evening filled with laughter, storytelling, great food and drink, and our community of healthcare superheroes. In 2023, we are excited to host this celebration for our doctors on campus.

There are reasons **why I do what I do**. I am very grateful to my patients for all the teaching they give to me. Part of my job is teaching residents what I learned from my patients every single day and I think that **they make me a better person**. Not only a better physician but a better person, and they are just wonderful.

Dr. Nicole Freehill,
LSU Obstetrics Physician
& Residency Program Director

Traditionally, we ask our doctors' patients to send in written testimonials expressing their gratitude for their care. This past year, we turned the tables and asked our doctors to share a few words of their appreciation for their patients. This special time is our opportunity to honor, acknowledge, and celebrate our LSU Health physicians who humbly care for, nurture, and heal our loved ones and the greater community.

We appreciate the **awesome job** that you do for all your patients. Thank you for your **big heart** and **generous spirit**.

Grateful Patient



\$9,493,037

in scholarship funds since 2019

TEACH

EDUCATION EMPOWERS



Olivia, Scholarship Recipient



Lucas, Scholarship Recipient

Scholarship Support continues to be a pressing need for students and leadership in each LSU Health Sciences Center School. As a direct result of this need, scholarship support is a priority focus for the LSU Health Foundation.

Education Empowers launched in the summer of 2019 with an aggressive goal to raise \$150 million in Scholarship support and establish 250 new scholarship funds to help offset the cost of obtaining a health education.

Knowledge is Power

Education Empowers students like Olivia, a first-generation medical student, who is passionate about equity in healthcare, particularly in women, and in low-income and homeless communities.

"There's sadly always going to be **healthcare disparities** wherever you go. That's something I'm **passionate** about, and that's something I will continue to **care for** regardless of what type of medicine I practice."

Olivia feels that the best way for her to be of use to society is to become a doctor, and that is made possible through the generosity of our LSU Health supporters. Scholarships inspire students like Olivia to go the extra mile in healthcare education.

Education Empowers students like Lucas, who have been deeply impacted by the generosity of others through scholarships.

"I promise that your **generosity** will extend beyond me. I hope to one day make a **meaningful contribution** to the educational pursuits of a future student in healthcare just as you have helped **turn my dreams into reality.**"

From Baton Rouge, Louisiana, Lucas graduated from Louisiana State University, having consistently achieved numerous Dean's List & President's Honor Roll Awards, and is now a student in the LSU Health School of Dentistry.

Lucas always wanted to have an impact on people's lives and chose dentistry because he believes the patient-provider connection is more impactful.



WHITE COAT CEREMONY

The first White Coat and stethoscope symbolize the beginning of an aspiring physician's journey in medicine. Each October, first-year medical students come together for this customary ceremony, where they are "coated" by the school's faculty members, committing to their medical education.

Thanks to the extraordinary generosity of our White Coat Ceremony Sponsors, we present each student with an LSU Cardiology grade Littman stethoscope, along with a personal note of inspiration and encouragement from a donor. Since 2019, donors have contributed \$51,500 to the White Coat fund.



Thanks to donor generosity, each student is gifted an LSU Cardiology grade Littman stethoscope.

"Receiving my White Coat and official LSU Health stethoscope was a day I will never forget. It was the day I fully realized I was on my path to becoming a physician. The message from my parents was encouraging and let me to imagine the time when my dad was in my very same shoes starting his medical journey, as he is now an alumnus of LSU. Thank you to all the alumni, parents, and friends for providing us with our first stethoscopes. I know my classmates and I will cherish them for years to come as our first tool in pursuing medicine."

Danielle Sketchler
Second-Year Medical Student

\$51,500
in White Coat gifts since 2019

You are the heart of medicine. Every time you use this stethoscope, remember just that. Keep the heart in great shape physically, mentally, emotionally, & spiritually. This is the best job you will ever have.

Robin D.

May your white coat remind you of the privilege it is to be able to take care of people across all walks of life. May your experiences humble you and make you strive to be a better doctor. Congratulations on your journey to one of the most exciting professions.

Irma P.



HEAL

THE PELICAN KREWE CREATING MEANINGFUL MOMENTS FOR COURAGEOUS FAMILIES

Make each day the BEST day possible. This is the goal of the Pelican Krewe's Pediatric Palliative Care Program team as they care for life's most vulnerable patients and their families; patients like critically ill 8-month-old Emma, born prematurely and diagnosed with a rare bone disease as well as severe brain and lung challenges.

Committed to fulfilling Emma's parents' lasting wish for her, the Pediatric Palliative Care Program at Children's Hospital worked closely with Emma's parents to meticulously plan and prepare for a family excursion where Emma could be like any other 8-month-old child spending time outdoors

with her family on a sunny spring day.

The Pediatric Palliative Care Program (PPC) is a collaboration between an interdisciplinary team of doctors, nurses, social workers, integrative therapists, child life specialists, and spiritual care therapists from LSU Health Sciences Center and Children's Hospital. Palliative care is sometimes referred to as comfort care because it focuses upon achieving the highest quality of life for those nearing the end of life.

Since the program first began in 2018, generous donor support through the LSU Health Foundation has helped to enhance and expand the breadth and scope of PPC patient and family services. From 2020 through 2022, PPC's strategic focus has been on establishing a Center of Excellence in Interdisciplinary Palliative Care in the Gulf South providing leadership, best practices, research, support, and training for interdisciplinary palliative care. In 2022, further expansion focused on the establishment of comfort suites which serve as dignified sanctuaries where children can spend their final moments comfortably and peacefully with their families within a hospital.



THE TEAL TEA

FESTIVE FUNDRAISING THAT RAISES AWARENESS

For more information about events and fundraisers, contact the Foundation at events@lsuhealthfoundation.org.

Local cancer awareness volunteers hosted a festive fashion show luncheon to raise money for cancer research in the Gulf Coast area. Cancer Survivor and Awareness Champion Lynn Naquin of Bay St. Louis chaired the event with Wanda Buras, a Cancer Awareness volunteer from New Orleans. The luncheon, now an annual event, raised more than \$26,000 in 2022.

The Teal Tea Luncheon was produced in partnership with The LSU Health Foundation, New Orleans, and The Al Copeland Foundation of New Orleans. All money raised benefited the Gynecologic Oncology Section at LSU Health to elevate patient care, research, and education focusing on women's cancer including ovarian cancer. The color teal was chosen because it symbolizes Ovarian Cancer Awareness month.

Lynn Naquin is a Stage 4 Ovarian Cancer survivor who credits the LSU Health Gynecologic Oncology team for saving her life. "I thank God every day that they are in my life," says Naquin.

The LSU Health Gynecologic Oncology team made up of Dr. Navya Nair, Dr. Amelia Jernigan, and Dr. Tara Castellano were all in attendance.

"One of our greatest resources is the generous, resilient and brave women who live here. We are so lucky to get the chance to care for and collaborate with them and get to know them and their loved ones. Lynn Naquin who organized the event is truly a force to be reckoned with," says Dr. Jernigan.

"We are impressed every day watching women pivot off of something as difficult as a cancer diagnosis and continue to give so much of themselves to their loved ones and the community. This Teal Tea luncheon is an opportunity to celebrate these fantastic women, learn more about gynecologic cancer prevention and care in the region and raise money to promote a better future for women with gynecologic cancer."

The luncheon featured small businesses whose wares were showcased in the fashion show. The 12 models for the fashion show were either Ovarian Cancer survivors or caretakers of loved ones with ovarian cancer.



SERVE

For more information about LSU Health Foundation service programs and how to support these events, please visit:

www.lsuhs.edu/orgs/camptiger

give.lsuhealthfoundation.org/tigerrunregistration

CAMP TIGER

Each year since 1985, the freshmen class of the LSUHSC School of Medicine in New Orleans has hosted Camp Tiger, a week-long summer day camp allowing children with special needs to come together for a full camp experience of field trips, activities, crafts, and friendship – all completely free of charge. Camp Tiger also gives medical students the unique opportunity to spend an entire week learning both the joys and challenges of working with a special needs population while empowering and inspiring the children and families we serve.

Participation in Camp Tiger is open to all qualified children between ages of 6 – 15 years old in the New Orleans, Northshore, Baton Rouge, and Lower Parish metropolitan areas who have special needs. Since its inception, Camp Tiger has benefited over 2,200 children from the Greater New Orleans and Baton Rouge areas. Past Camp Tiger activities have included trips to Audubon Zoo, Louisiana Children’s Museum, Saints

Training Facility, and City Park. For the campers, this may be their only chance to socialize with other children without being singled out for their disabilities. This camp lets campers be “just one of the kids” and provides them with the freedom to play, socialize and express themselves as healthy, vibrant children.

The annual Camp Tiger Benefit and Auction is the largest fundraising source for Camp Tiger, which is hosted at no cost. All proceeds from the Auction directly benefit Camp Tiger.

GIVE KIDS A SMILE



This year, the LSU Health New Orleans School of Dentistry faculty, students and residents hosted two busloads of first graders from Dr. John Ochsner Kenner Discovery Academy. It was Give Kids a Smile Day. After a rousing welcome through a tunnel of cheering LSU Health students, the youngsters were divided into groups to rotate through four stations at the clinic.

Kids enjoyed activities at the stations including games; molding healthy foods into works of art with modeling clay; dental hygiene how-tos like brushing, flossing and nutrition and the "What is Healthier?" interactive dancing game; coloring and face painting; and a photo booth for fun souvenirs of the day. LSU Health New Orleans faculty dentists, dental and dental hygiene students, and dental residents screened and cleaned the children's teeth and applied sealants where warranted.

The children learned about foods and drinks that make teeth happy or sad because of dreaded "sugar bugs." They could perfect their brushing skills on stuffed animals with full sets of teeth.

Dental students Grayson Lambert and Blaire Land planned and organized the day, with lots of help from other dental and dental hygiene students. Dr. Linda Cao was the faculty advisor.

The American Dental Association launched Give Kids a Smile Day in 2003 to provide free oral health education, screenings, preventive, and restorative treatment to children each year. It is a way of giving back that is particularly gratifying for LSU Health New Orleans School of Dentistry. The fun learning and preventive care they deliver can contribute to a lifetime of healthy smiles.

TIGER RUN



This past year, the LSU Health Sciences Center School of Medicine in New Orleans hosted its 35th annual Tiger Run. Tiger Run is historically a 5K that raises funds for charitable student-run organizations at the School of Medicine, including Student-Run Community Clinics, and it has raised more than \$32,000 for these clinics in recent years.

LSUHSC Student-Run Community Clinics (SRCC) are fully organized and staffed teams of medical students who are dedicated to providing a foundation of quality healthcare to the under-served and disadvantaged of the New Orleans community.

LSU Health New Orleans Student-Run Homeless Clinics are among the oldest in the country. Begun

in 1991 to provide a foundation of quality health care to the under-served and disadvantaged of the New Orleans community, the clinics have taken care of thousands of patients over the years.

Through their clinics at the New Orleans Mission and Ozanam Inn, each week LSU Health New Orleans medical students and faculty contribute full primary care medical services including medications from their on-site pharmacy. The students also perform TB testing, HIV/Hep C testing, and offer flu shots. The LSU Health clinic at Ozanam Inn also provides dental services such as oral cancer screenings, dental exams, and tooth extractions. LSU Health School of Dentistry students and faculty staff the dental clinic.

FINANCIALS

2019

2023

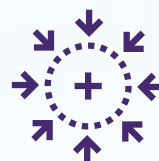
Thank you for your dedication to our mission.



DISCOVER



TEACH



HEAL



SERVE

A gift to the LSU Health Foundation makes an immediate impact and changes lives. Whether it benefits life-saving research or future healthcare providers' education, your gift leaves a legacy of hope and healing.

\$40,896,002

Raised for LSU Health New Orleans

The Second Line

Between 2020 and 2022, 1,245 donors have supported the LSU Health Foundation at a cumulative giving level of \$1,000+ within a calendar year. They are recognized as valued Second Line members.

Krewe De Bronze	\$1,000-\$2,499 / year
Krewe D'Argent	\$2,500-\$4,999 / year
Krewe D'Or	\$5,000-\$9,999 / year
Krewe De Platine	\$10,000+ / year

Between 2019 & 2023

- Faculty and staff generously gave **\$2,355,751**. Of that, **\$77,796** are payroll deductions.
- **2,201** of you gave to an LSU Health Foundation fund for the first time.
- Giving day appeals, including Give Nola and Giving Tuesdays, total **\$153,638**.
- Donors have given **\$9,493,037** in scholarship funds.
- Donors have contributed **\$51,500** to the White Coat fund.